

Antarctica is covered in a sheet of ice that's 7,000 feet thick.



For reference, that's about 19 football fields. The **U.S. Antarctic Program** also notes that if the ice sheet ever suddenly melted, it would raise the sea level worldwide an estimated 200 feet and submerge much of the Gulf and Atlantic coastal areas of the U.S.

McDonald's once created bubblegum-flavored broccoli.



McDonald's is always introducing new items for their loyal customers. And obviously, some are more successful than others. But their **bubblegum-flavored broccoli**, which the fast-food chain developed in 2014 as a tastier version of the leafy green for children, was a complete failure. McDonald's CEO **Don Thompson** admitted that kids were confused by the taste.

The longest place name in the world is 85 letters long.



Alamy

Unfortunately, this is one of the facts you probably can't repeat to your friends—and that's because it's nearly impossible to pronounce.

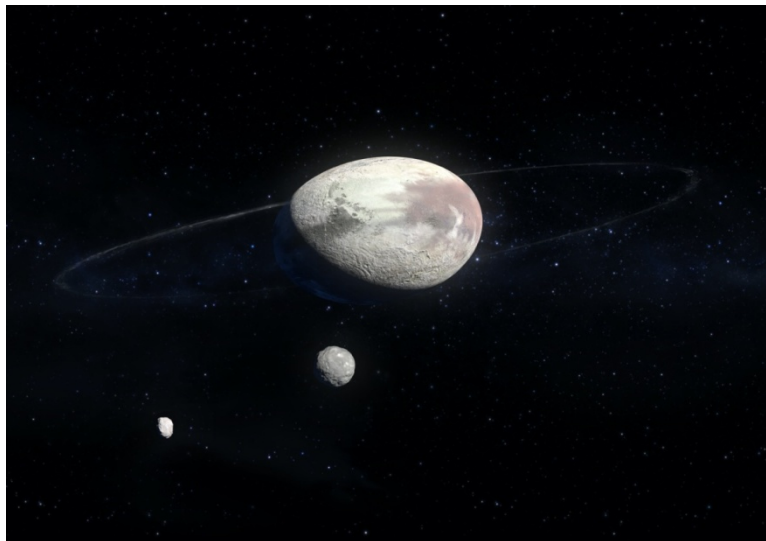
Taumatawhakatangihangakoauauotamateaturipukakapikimaungahoronukupokaiwhenuakitanatahu is in New Zealand and is 85 letters long. And when it comes to other super **long place names**, it's followed by Llanfairpwllgwyngyllgogerychwyrndrobwllllantysiliogogoch in Wales, Chargoggagoggmanchauggagoggchaubunagungamaugg in the U.S., Tweebuffelsmeteenskootmorsdoodgeskietfontein in South Africa, and Azpilicuetagaraycosaroyarenberecolarre in Spain.

Birds in Minnesota get drunk off of berries.



In October 2018, the Gilbert Minnesota Police Department issued a public notice about birds that appeared to be "**under the influence**." It turns out that the airborne animals were apparently eating berries that had fermented due to early frost, which was making them "tipsy." Unfortunately, this meant that the buzzed birds were acting confused and flying into windows. Hopefully, they were able to sleep it off.

There's a planet that's shaped like a potato.



Not every celestial object has a shape that's as perfectly majestic as planet Earth. In fact, some of them are downright hilarious to look at. Take Haumea, for example. This **dwarf planet** is cool for a number of reasons. About the same size as Pluto, Haumea orbits the sun beyond Neptune and has rings similar to Jupiter. But what makes this object even more interesting is that it's shaped like a potato.



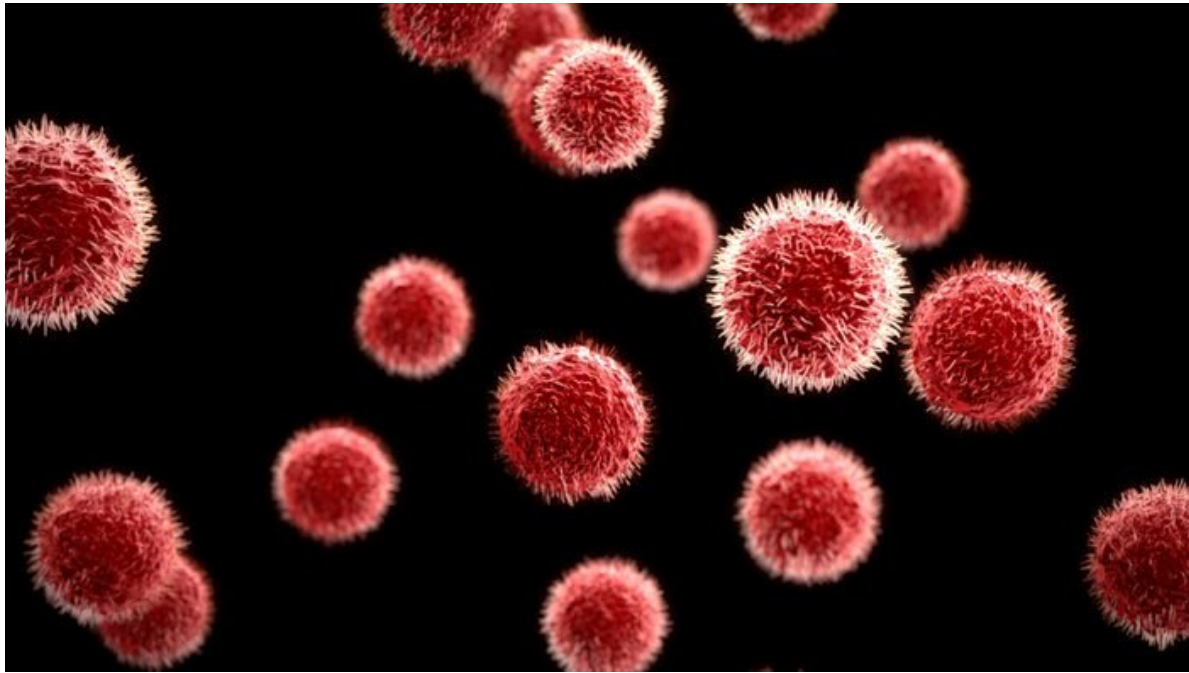
Did you know trees can communicate?

Trees talk. Their roots are connected through an underground network of fungi, nicknamed the “Wood Wide Web,” that allows them to share resources with each other. They “talk” by transmitting nutrients to one another through the fungi. For instance, a mother tree, or oldest and strongest tree in the forest, will share some of her sugars with smaller, nearby trees.



Did you know there's a secret vault that holds nearly every type of crop seed?

It's the Svalbard Global Seed Vault, located in one of the coldest corners of the world: an island on the Svalbard archipelago, between Norway and the North Pole. This remote location allows the natural permafrost cooling necessary for proper storage of the world's largest collection of crop diversity. If the zombie apocalypse were to become a reality, or just if farmers' fields start to dry out, this seed vault would come to the rescue.



Did you know viruses are not live?

Viruses are not living things—they are inanimate and do not have cells. This means that they “cannot turn food into energy, and without a host, they are just inert packets of chemicals,” according to *Discover Magazine*.



Did you know the fastest reptile is the sea turtle?

Marlin and Dory had a wild ride when they went for a cruise on Crush’s back. And it seems that scene has a basis in truth: Sea turtles can swim as fast as 35 mph.



Did you know most of the Earth's freshwater is stored in glaciers and icecaps?

Nearly 70 percent of Earth's freshwater is stored in the coldest spots on the globe: in glaciers and icecaps.



Did you know an Alaskan town goes dark for over 60 days?

The residents of Barrow, Alaska, must be the most avid consumers of vitamin D supplements, because their town sees darkness for about 65 days of the year. The 65 days of darkness, known as polar night, is due to their geographical location above the Arctic Circle.



Did you know in India, most marriages are arranged?

A survey by the Centre for the Study of Developing Societies in Delhi and German foundation Konrad-Adenauer-Stiftung found that a high number—84 percent!—of Indian youth were in arranged marriages.



Did you know carbs make you sleepy?

Ever wonder why everyone in your family passes out after a huge meal? Most comfort foods include carbohydrates, and carbs contain an amino acid called tryptophan that can cause sleepiness..